

8

7

6

5

4

3

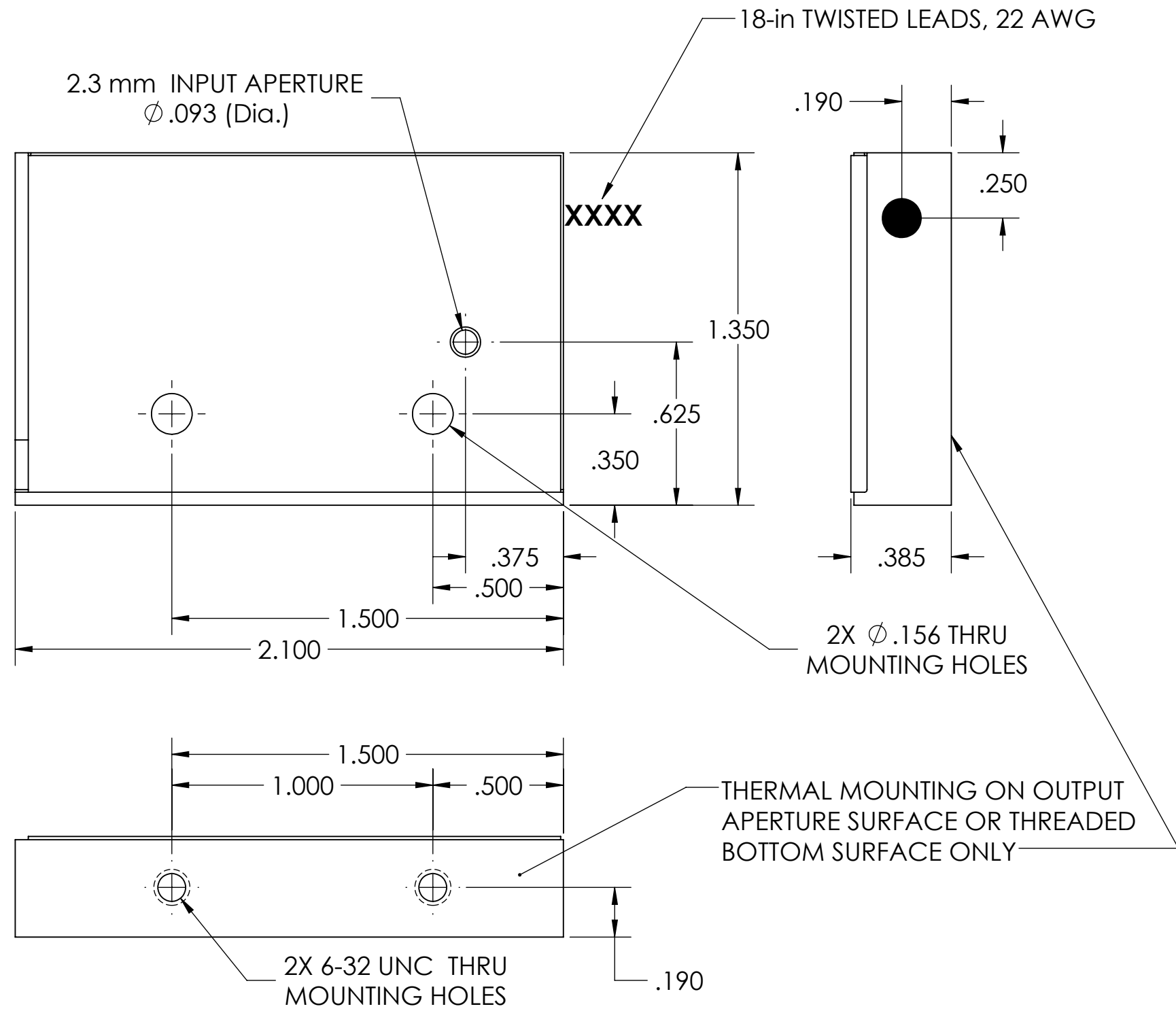
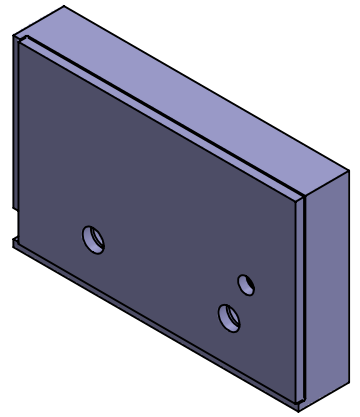
2

1

NOTES (UNLESS OTHERWISE SPECIFIED):

- 1. ALL COMPONENTS AND MATERIALS OF THIS ASSEMBLY OR PART MUST BE CERTIFIABLY ROHS COMPLIANT.
- 2. 3D DATA BASE SHALL BE USED IN CORRELATION WITH THIS DRAWING FOR FEATURES NOT DIMENSIONED ON FACE OF THIS DRAWING.
 - 1. 3D MODEL (STEP) FILE AVAILABLE UPON REQUEST
- 3. ASSEMBLE PER NM LASER PROCEDURE SPECIFICATIONS

REVISIONS				
ECO#	REV.	DESCRIPTION	DATE	APPROVED
	A	INITIAL RELEASE	12/06/2019	M.K.



NM LASER LST4WBK SPECIFICATIONS	
SHUTTER CLASS	SAFETY / PROCESS
APERTURE DIAMETER	2.3 mm
TYPICAL BEAM DIAMETER	1.0 mm
MAX. CW OPTICAL POWER	2 W
THERMAL POWER DISSIPATION	4W HOLD OPEN, 10W @ 50 Hz
MINIMUM HOLD VOLTAGE	10 VDC
MAX. SHUTTER REP RATE	50 Hz
SWTCHING SPEED	1 ms + 2 ms COMMAND DELAY
NOMINAL COIL IMPEDANCE	22 Ohms
POSITION SENSORS	NOT AVAILABLE
WIRE HARNESS	TWISTED 2-LEAD, 22 AWG
CONNECTOR	FLYING LEADS, OR ANY 2-PIN

	NAME	DATE
DRAWN	B.L.	12/02/19
CHECKED	M.K.	12/06/19
ENG APPR.		
MFG APPR.		
Q.A.		

3RD ANGLE PROJECTION

DIMENSIONS ARE IN INCHES
TOLERANCES:
ANGULAR: ±1°
ONE DECIMAL: X.X ±.1
TWO DECIMAL: X.XX ±.015
THREE DECIMAL: X.XXX ±.005

DO NOT SCALE DRAWING

TITLE:
SHUTTER, LST200, LST200SLP

SIZE	DWG. NO.	REV
B	LST200SLP	A

SCALE: 2:1 SHEET 1 OF 1

PROPRIETARY AND CONFIDENTIAL
THE DESIGN INFORMATION CONTAINED HEREIN IS THE SOLE PROPERTY OF NM LASER PRODUCTS, INC. THE DISCLOSURE OF THIS INFORMATION DOES NOT CONSTITUTE THE RELEASE OF THE PROPRIETARY RIGHTS THEREOF, BUT IS TO BE USED FOR INFORMATION PURPOSES ONLY WHEN NECESSARY. PERMISSION TO REPRODUCE THIS INFORMATION OF THE PRODUCT DESCRIBED HEREIN MUST BE OBTAINED IN WRITING FROM NM LASER PRODUCTS, INC.

8

7

6

5

4

3

2

1