

8

7

6

5

4

3

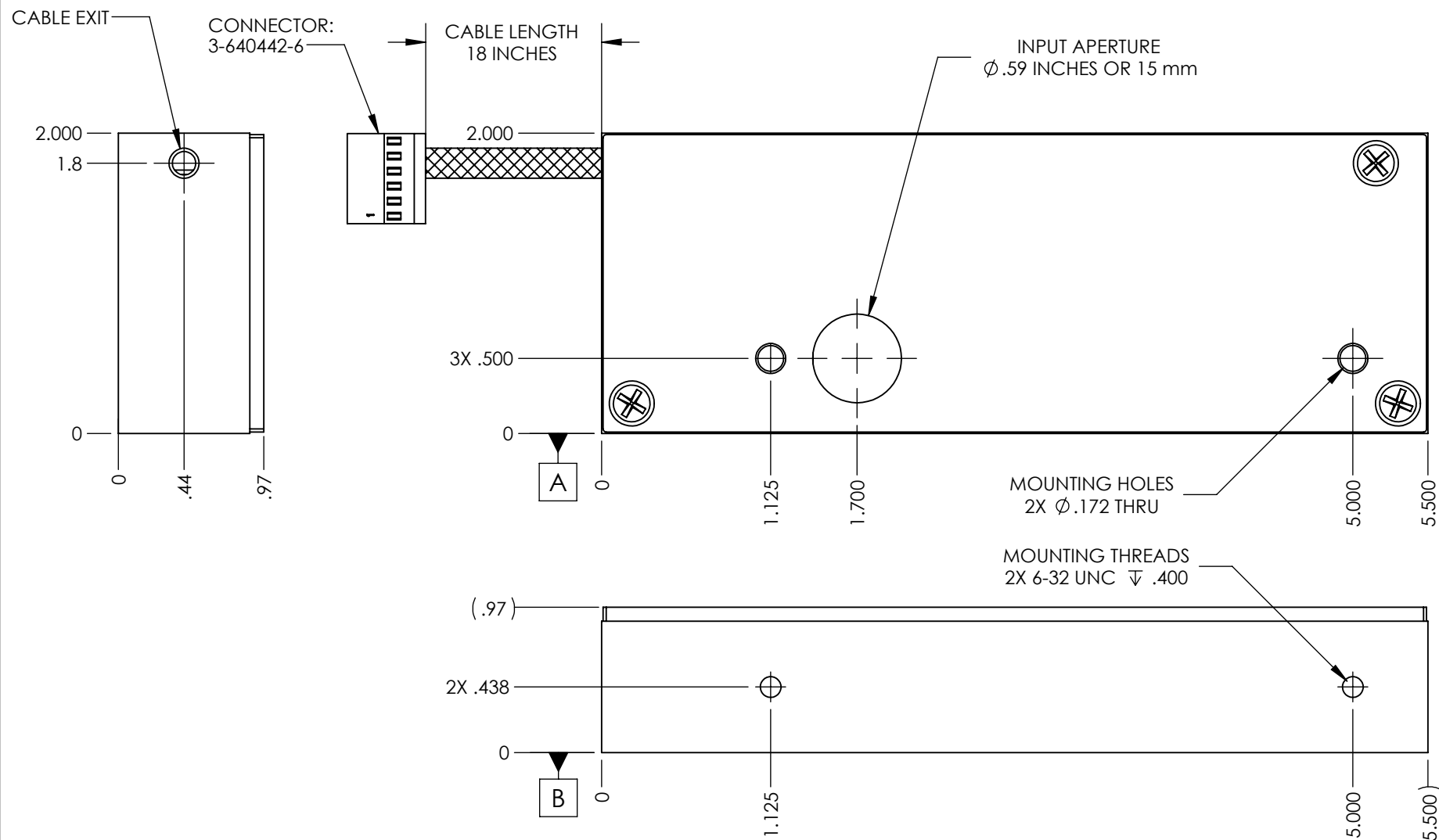
2

1

**NOTES (UNLESS OTHERWISE SPECIFIED):**

- 1. ALL COMPONENTS AND MATERIALS OF THIS ASSEMBLY OR PART MUST BE CERTIFIABLY ROHS COMPLIANT.
- 2. 3D DATA BASE SHALL BE USED IN CORRELATION WITH THIS DRAWING FOR FEATURES NOT DIMENSIONED ON FACE OF THIS DRAWING.
- 3. 3D MODEL (STEP) FILE AVAILABLE UPON REQUEST
- 4. SPECIFICATIONS APPROVED PER CX4000B CONTROLLER OR NMLASER ELECTRICAL SPECIFICATIONS.

REVISIONS			
REV.	DESCRIPTION	DATE	APPROVED
A	INITIAL RELEASE	03/27/23	M.K.




PIN #	COLOR	FUNCTION
1	WHITE	POWER WINDING (+)
2	BLACK	POWER WINDING (-)
3	RED	SENSOR SUPPLY, 5 VDC(+) - 30mA
4	YELLOW	NORMALLY OPEN SENSOR (HI - OPEN)
5	ORANGE	NORMALLY CLOSED SESNOR (HI - CLOSE)
6	BLUE	5V RETURN AND SENSOR GROUND

PROPRIETARY AND CONFIDENTIAL  
 THE DESIGN INFORMATION CONTAINED HEREIN IS THE SOLE PROPERTY OF NM LASER PRODUCTS, INC. THE DISCLOSURE OF THIS INFORMATION DOES NOT CONSTITUTE THE RELEASE OF THE PROPRIETARY RIGHTS THEREOF, BUT IS TO BE USED FOR INFORMATION PURPOSES ONLY WHEN NECESSARY. PERMISSION TO REPRODUCE THIS INFORMATION OF THE PRODUCT DESCRIBED HERE IN MUST BE OBTAINED IN WRITING FROM NM LASER PRODUCTS, INC.

**LST500 SPECIFICATIONS**

OPTICAL SPECS.	
Aperture Size	15 mm
Typical Beam Diameter	5-10 mm
Optic Options	-1 (1064nm), -2 (532 nm), -3 (355 nm), Gold Optics, Aluminum Optics
Maximum Power Handling	100 W (Glass Optics) 30 W (Gold and Aluminum Optics)
Damage Threshold	2 J/cm <sup>2</sup> @ 10 ns (Glass Optics) 500 mJ/cm <sup>2</sup> 10 ns (Gold/Al Optics)
ELECTRICAL SPECS.	
Power Supply	24 VDC, 2 AMP RATING
Electrical Drive Circuit	Boost Open- 24V for 25 ms Hold Open - 8 V Delay - 17 ms Brake - 24V for 6ms
Winding Resistance	11 Ohms @ Room Temp.
Winding Inductance	25 mH
Position Sensors	Logic TTL, Require 5VDC @ 30mA
PERFORMANCE SPECS.	
Open Delay Time	10 ms
Open Rise Time	20 ms
Open Total Time	30 ms
Close Delay Time	10 ms
Close Fall Time	20 ms
Close Total Time	30 ms
Min. FWHM Exposure	50 ms
Max. Repetition Rate	10 Hz (CUSTOM - 15 Hz)
THERMAL SPECS.	
Power Dissipation Holding Open	5 W
Power Dissipation Cycling	20 W @ 10 Hz
Max. Operation Temperature	50 C
Mounting Surface	Datum A, Datum B

DIMENSIONS ARE IN INCHES TOLERANCES: ANGULAR: ±1° ONE DECIMAL: X.X ±.1 TWO DECIMAL: X.XX ±.015 THREE DECIMAL: X.XXX ±.005	NAME	DATE		
	DRAWN	M.K.		6/15/2022
	CHECKED			
	ENG APPR.			
TITLE: <b>SHUTTER, LST500</b>			SIZE DWG. NO. REV <b>B LST500 A</b>	
MFG APPR. Q.A. 3RD ANGLE PROJECTION				
DO NOT SCALE DRAWING				
SCALE: 1:1		SHEET 2 OF 2		

8

7

6

5

4

3

2

1