

8

7

6

5

4

3

2

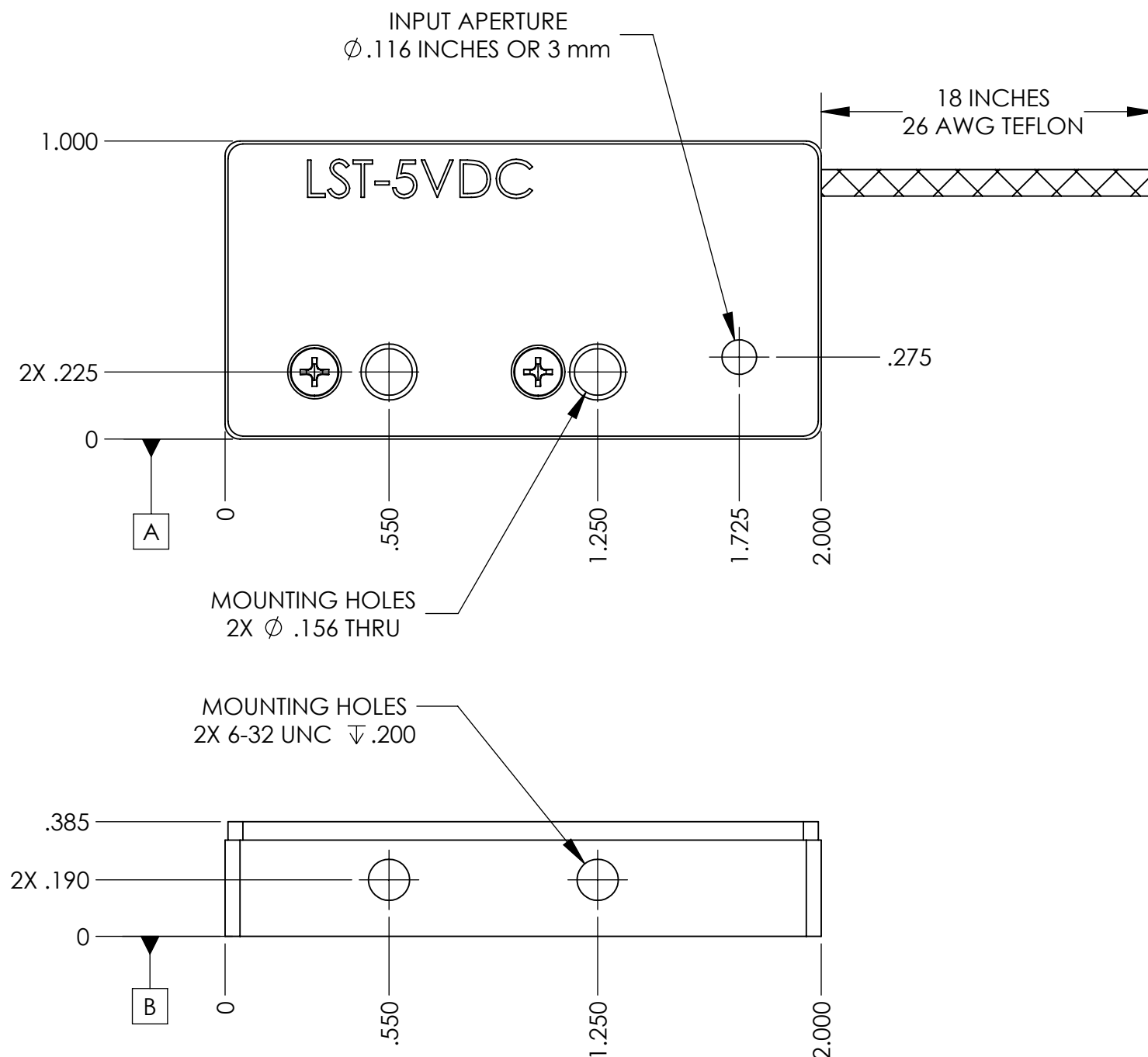
1

**NOTES (UNLESS OTHERWISE SPECIFIED):**

1. ALL COMPONENTS AND MATERIALS OF THIS ASSEMBLY OR PART MUST BE CERTIFIABLY ROHS COMPLIANT.
2. 3D DATA BASE SHALL BE USED IN CORRELATION WITH THIS DRAWING FOR FEATURES NOT DIMENSIONED ON FACE OF THIS DRAWING.
3. ASEMBLE PER NMLASER MANUFACTURER INSTRUCTIONS ASSEMBLY PROCEDURES MANUAL.
4. **APPROVED FOR DIRECT DRIVE 5VDC AT 500mA RATING.**

REVISIONS			
REV.	DESCRIPTION	DATE	APPROVED
A	INITIAL RELEASE	03/13/2024	M.K.

SWITCHING TIME SPECIFICATIONS		
SPECIFICATION	1 mm BEAM	3mm FULL APERTURE
Open Delay Time	3.5 ms	3.0 ms
Open Rise Time	1.0 ms	2.0 ms
Open Total Time	4.5 ms	5.0 ms
Close Delay Time	2.3 ms	1.5ms
Close Fall Time	0.7 ms	2.0 ms
Close Total Time	3.0 ms	3.5 ms
fly-back diode(s) in circuit		



LST-5VDC SPECIFICATION	
ELECTRICAL DRIVE	DIRECT DRIVE 5V AT 0.5 A
APERTURE DIAMETER	3.0 mm
TYPICAL BEAM DIAMETER	1.0 mm
MAX. OPTICAL POWER HANDLING	2 Watts (30mJ/cm <sup>2</sup> LIDT)
MAXIMUM REPETITION RATE	50 Hz (Continuous)
THERMAL POWER DISSIPATION HOLDING OPEN	2.5 WATTS
THERMAL POWER DISSIPATION AT 50 Hz	1.2 WATTS
NOMINAL MAGNETIC IMPEDANCE	10 Ohms
THERMAL MOUNTING SURFACE	DATUM A OR B
CUSTOMIZATION AVAILABLE	DIRECT DRIVE 12V AT 0.2A

UNLESS OTHERWISE SPECIFIED:  
 DIMENSIONS ARE IN INCHES  
 TOLERANCES:  
 ANGULAR: ±1°  
 ONE DECIMAL: X.X ±.1  
 TWO DECIMAL: X.XX ±.015  
 THREE DECIMAL: X.XXX ±.005  
 OVERALL FINISH:  
 NICKEL PLATED  
 MATERIAL:  
 SEE BOM

	NAME	DATE
DRAWN	M.K.	3/5/2021
CHECKED		
ENG APPR.		
MFG APPR.		
Q.A.		

**nmLaser Products**  
The Source for Laser Shutters

TITLE:  
SHUTTER, 5V DIRECT DRIVE

SIZE DWG. NO. REV  
**B** LST-5VDC **A**

SCALE: 1:1 SHEET 1 OF 1

8

7

6

5

4

3

2

1